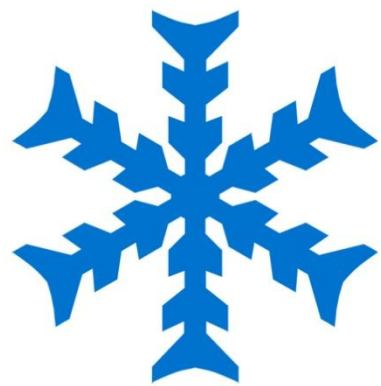


**CONTROLLED ATMOSPHERE
QUALITY DOORS**



infracca



INFRACA – CA QUALITY DOOR



LEAF: Internal insulation injected individually in polyurethane with 45 Kg/m³ density.

Superimposed on the frame , with inner frame according to thickness and framed in anodized.

INFRACA – CA QUALITY DOORS

GUIDE

- Stainless steel and extruded aluminum airtight closure system with 45° drop.
- Four polyethylene rollers.
- Stainless steel. Adjustment system allowing to adjust the leaf to the panel or wall.



INFRACA- CA QUALITY DOOR



INFRACA designed **stainless steel handles** which enable the doors to be opened with the minimal effort.

Equipped with 4 eccentric handle to ensure the door airtightness.



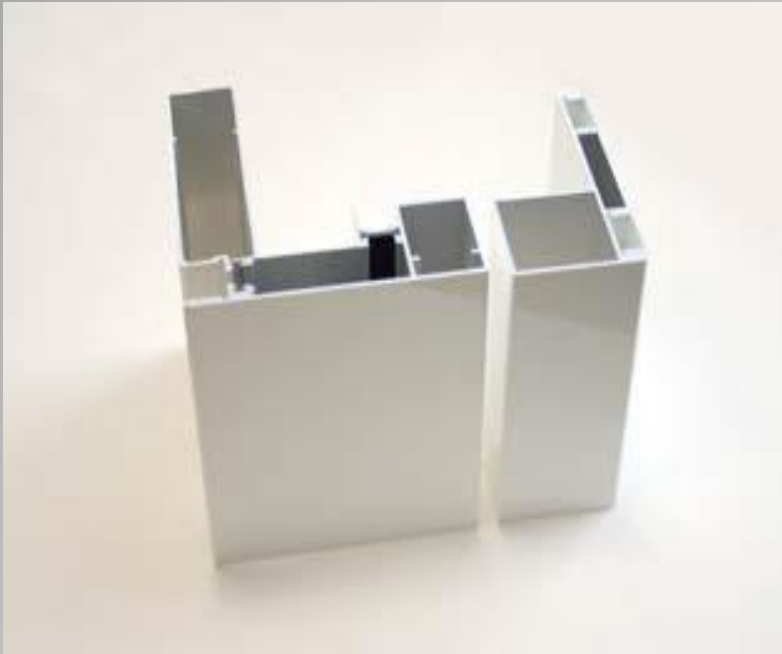
INFRACA- CA QUALITY DOOR



Guaranteed airtightness by means of double, high flexible co-extruded EPDM gasket.

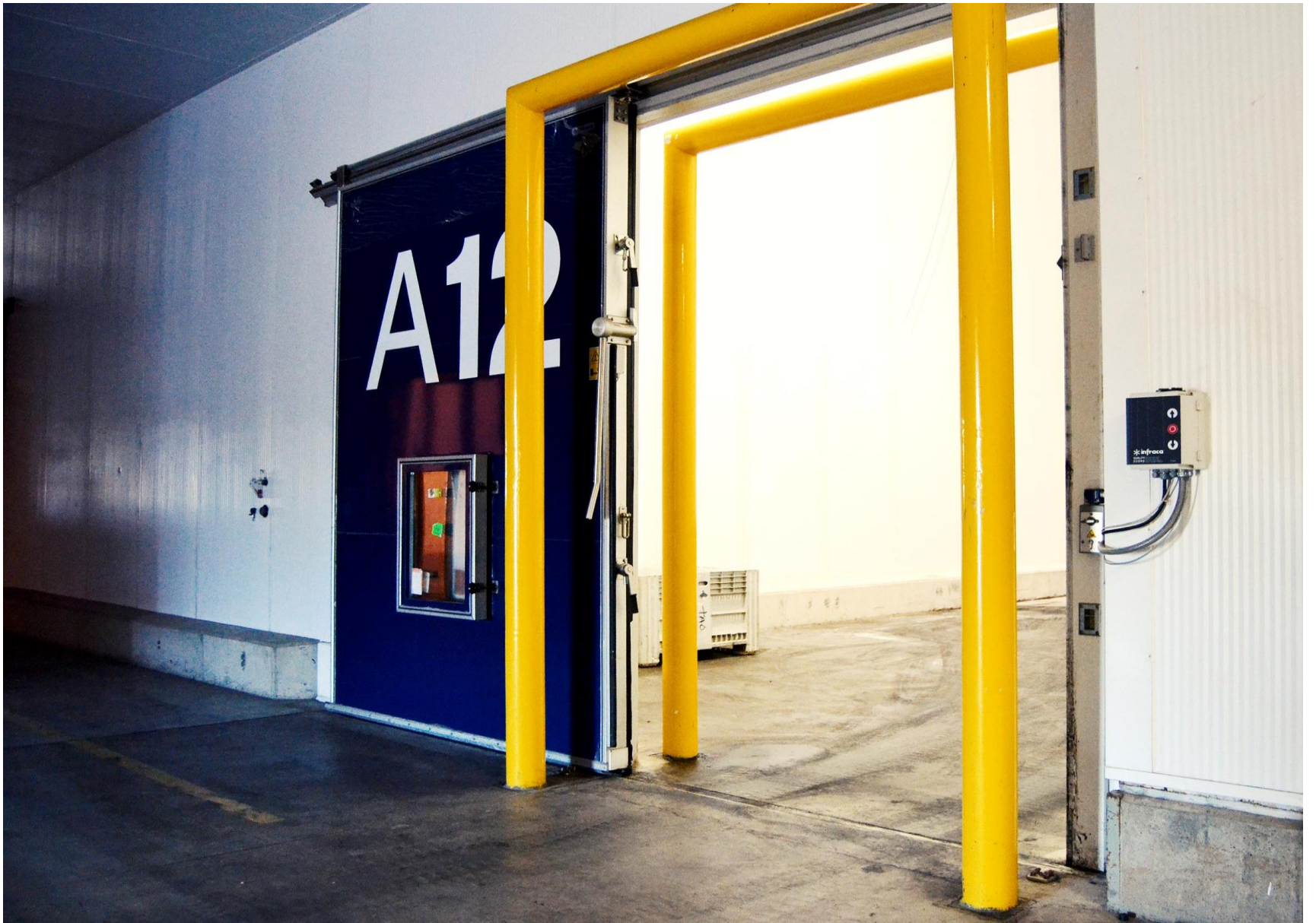
Phosphorescent interior handle base plate for installation safety. Visible without light

INFRACTA- CA QUALITY DOOR



Door frame in extruded aluminum Made of L-shaped extruded aluminum with double thermal break, treated 20-micron anodizing or white lacquered.

FRAME injected in polyurethane to guarantee airtightness.

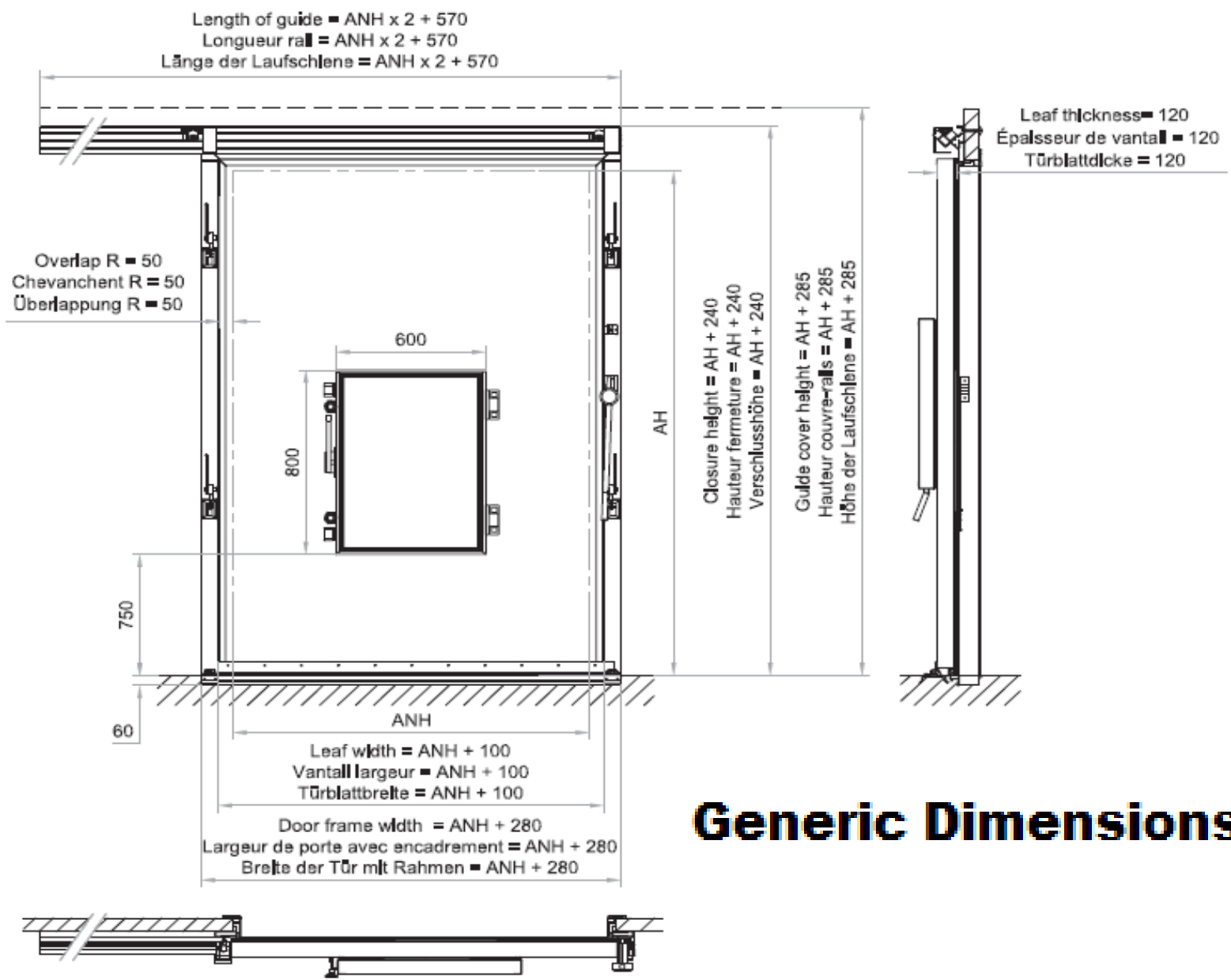


INFRACA- CA QUALITY DOOR



800X600 Control window installed in the leaf. Airtight closure by means of pressure wheels

Control window to install in the panel.



Generic Dimensions





QUALITY | frigoríficas · rápidas · interior
DOORS | cold rooms · rapid · indoor
frigorífiques · rapides · intérieur
kühlraum · schnelllauf · betriebsraum